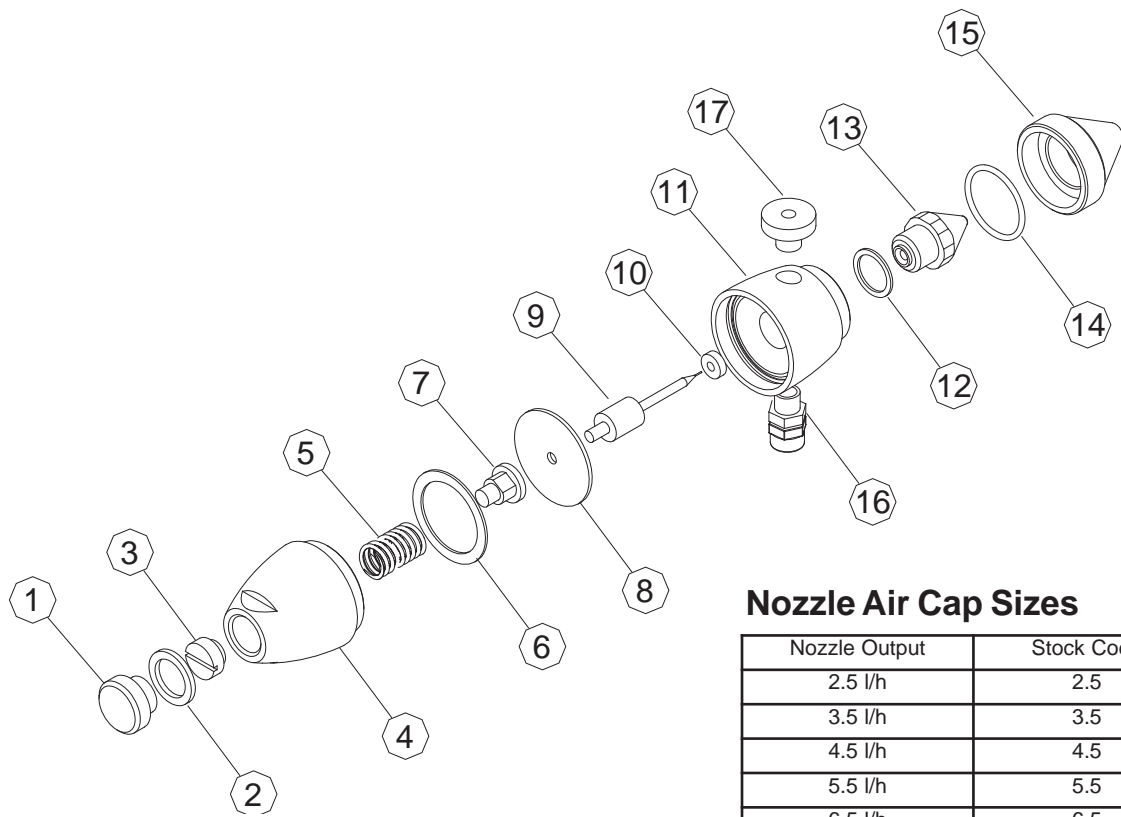


9.5 JetSpray Nozzle



Nozzle Air Cap Sizes

| Nozzle Output | Stock Code |
|---------------|------------|
| 2.5 l/h | 2.5 |
| 3.5 l/h | 3.5 |
| 4.5 l/h | 4.5 |
| 5.5 l/h | 5.5 |
| 6.5 l/h | 6.5 |
| 9.0 l/h | 9.0 |
| 12.0 l/h | 12.0 |
| 15.0 l/h | 15.0 |

Standard Parts List

| Item | Stock Code | Description | Item | Stock Code | Description |
|------|------------|-------------------------|------|------------|---------------------------------|
| 1 | 01318 | Nozzle Back Nut | 10 | 01303 | Nozzle Cleaning Pin Seal |
| 2 | 01321 | Nozzle Back Nut Washer | 11 | 01282 | Nozzle Body Front |
| 3 | 01312 | Nozzle Balancing Screw | 12 | 01291 | Nozzle Water Jet Washer |
| 4 | 01285 | Nozzle Body Rear | 13 | 01288 | Nozzle Water Jet (2.5-5.5 l/h) |
| 5 | 01315 | Compression Spring | | 01289 | Nozzle Water Jet (9.0-15.0 l/h) |
| 6 | 01309 | Nozzle Diaphragm Washer | 14 | 01294 | Nozzle Air Cap O Ring |
| 7 | 01300 | Nozzle Cleaning Pin Nut | 15 | See Table | Nozzle Air Cap |
| 8 | 01306 | Nozzle Diaphragm | 16 | 01192 | 1/8 x 6mm Push Fit |
| 9 | 01297 | Nozzle Cleaning Pin | 17 | 01324 | Air Inlet Side Nipple |